

MODEL: GR-150XL

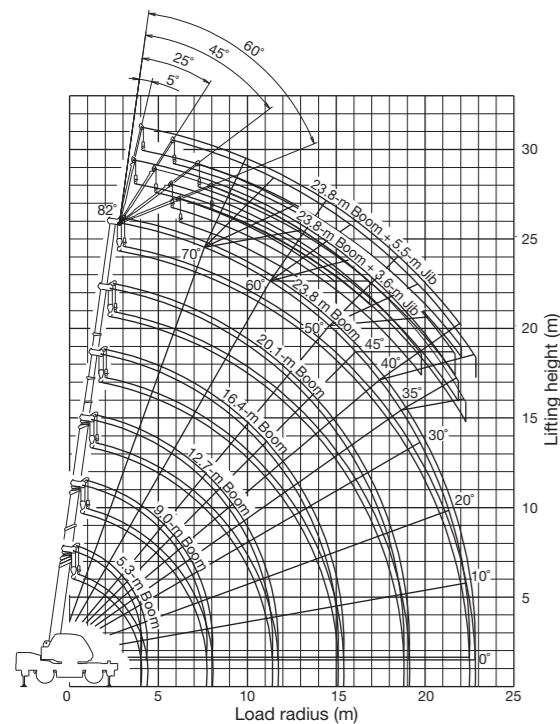
SPECIFICATIONS

MAXIMUM CAPACITY	13,600 kg at 1.52 m
PERFORMANCE	
Max. traveling speed	49 km/h
Gradeability (tan θ)	53%
WEIGHT	
Gross vehicle mass	13,960 kg (incl. 13.6 ton hook block)
-front axle	6,890 kg
-rear axle	7,070 kg
MIN. TURNING RADIUS	6.5 m (2-wheel steering), 3.8 m (4-wheel steering) (at center of extreme outer tire)
BOOM	6-section full power synchronized telescoping boom.
Fully retracted length	5.3 m
Fully extended length	23.8 m
Extension speed	18.5 m in 52 s
Angle	-3°-82°
Elevation speed	-3° to 82° in 29 s
JIB	2-staged boom extension. (Tilt type)
Offset	5°, 25°, 45°, 60°
Length	3.6 m or 5.5 m
MAIN WINCH	Grooved drum driven by hydraulic axial piston motor through winch speed reducer.
Single line pull	1,800 kg (4,000 lbs)
Single line speed	125 m/min. (at 5th layer)
Wire rope	137 m of 11.2 mm (Diameter x length)
AUXILIARY WINCH	Grooved drum driven by hydraulic axial piston motor through winch speed reducer.
Single line pull	1,800 kg (4,000 lbs)
Single line speed	110 m/min. (at 3rd layer)
Wire rope	66 m of 11.2 mm (Diameter x length)
SLEWING	
Slewing Speed	2.4 min ⁻¹ {rpm}
Tail slewing radius	1,600 mm
HYDRAULIC SYSTEM	Pumps... 2 variable piston pumps for crane functions. Tandem gear pump for steering, slewing and accumulator. Control valves... Multiple valves actuated by pilot pressure with integral pressure relief valves. Reservoir... 172 lit. (45 gallon) capacity. External sight level gauge. Oil cooler... Air cooled fan type.

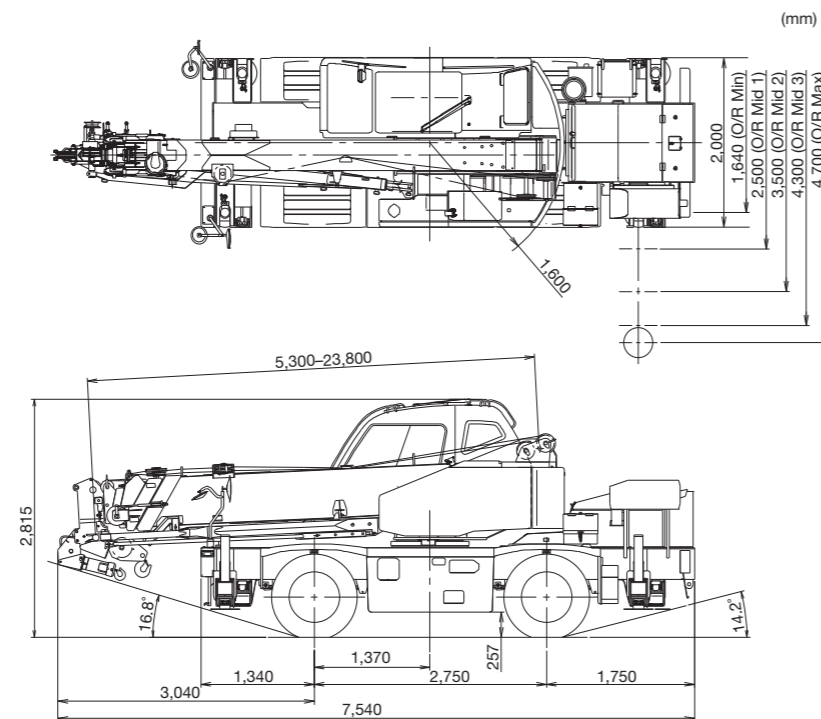
LOAD MOMENT INDICATOR (TADANO AML-C)	Following information is displayed: • Control lever lockout function with audible and visual pre-warning • Boom position indicator • Outrigger state indicator • Boom angle / boom length / jib offset angle / load radius / rated lifting capacities / actual loads read out • Ratio of actual load moment to rated load moment indication • Automatic speed reduction and slow stop function for boom elevation and slewing • Working condition register switch • Load radius / boom angle / tip height / slewing range preset function • External warning lamp
OUTRIGGERS	4 hydraulic, beam and jack outriggers. Vertical jack cylinders equipped with integral holding valve. Each outrigger beam and jack is controlled independently from cab.
Extension width	Max. ... 4,700 mm Mid. ... 4,300 mm & 3,500 mm & 2,500 mm Min. ... 1,640 mm, Float size (Diameter) ... 350mm
CARRIER	Rear engine, right-hand drive, driving 2-way selected type by manual switch. 4 x 2 front drive, 4 x 4 front and rear drive.
ENGINE	Model... Mitsubishi 4M50-TLA3B EPA Tier3 Type... 4-cycle, turbo charged and after cooled, 4-cylinder, direct injection diesel. Piston displacement... 4.9 in (299 liters) Bore x stroke... 114 mm x 120 mm Max. output... 129 kW at 2,700 rpm {min ⁻¹ } Max. torque... 530 N·m at 1,600 rpm {min ⁻¹ }
TRANSMISSION	Electronically controlled full automatic transmission.
STEERING	Hydraulic power steering. 4 steering modes available: 2-wheel front, 2-wheel rear 4-wheel coordinated, 4-wheel crab
SUSPENSION	Semi-elliptic leaf springs with hydraulic lockout device.
TIRES	275/80R22.5, Single x 4
FUEL TANK CAPACITY	189 liters (50 gal.)

NOTE: Each crane motion speed is based on unladen conditions.

WORKING RANGE



DIMENSIONS



NOTE: Some specifications are subject to change.



ROUGH TERRAIN CRANE

GR-150XL

13.6 METRIC TON CAPACITY

ROUGH TERRAIN CRANE



*The GR-150XL:
High Quality We Are Proud Of*



Lifting your dreams

TADANO LTD. (International Sales Division)
4-12, Kamezawa 2-chome, Sumida-ku Tokyo 130-0014, Japan
Phone: +81-3-3621-7750 Fax: +81-3-3621-7785
http://www.tadano.com/ E-mail: info@tadano.com



Little Crane, Big Power.

An attractive feature of this crane is its small size. It also has high lifting capacity and the longest boom in its class.

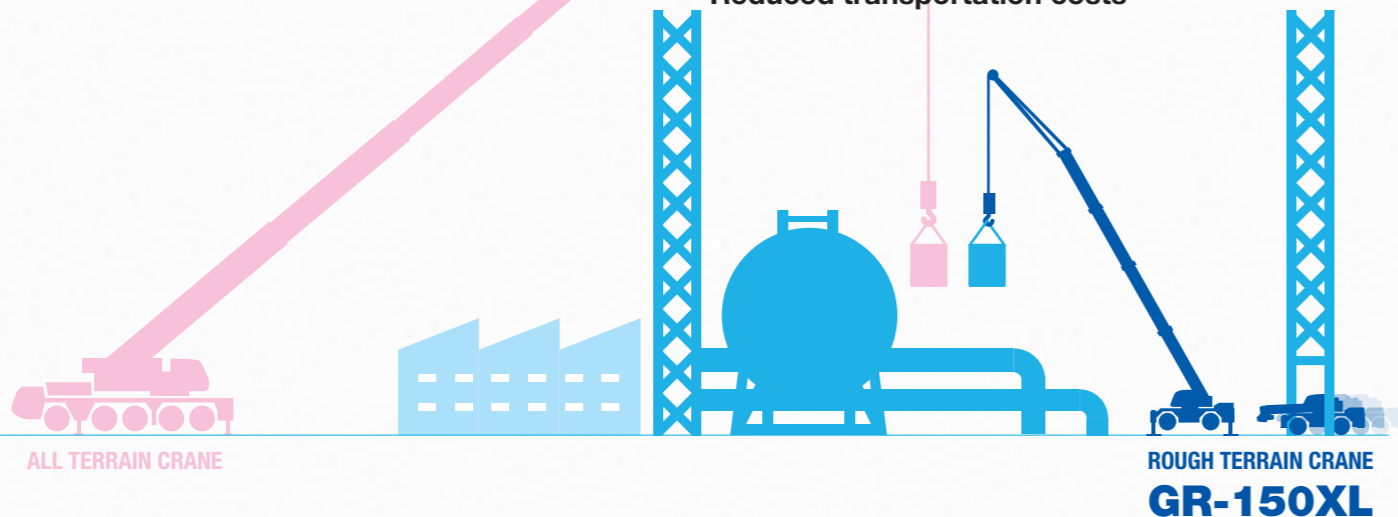


ROUGH TERRAIN CRANE GR-150XL

Benefits of the GR-150XL

A compact and highly maneuverable design enables operators to complete jobs more efficiently compared to other bulkier alternative models.

- Easy approach to tight or busy job sites
- Quick Setup
- Asymmetrical outriggers offer maximum work value
- Reduced transportation costs



Carrier

Substantial safety devices allow excellent operability.

Unobstructed view when driving

Down-slanted boom improves front and side views. A front view monitor and camera also improve driver visibility.



Front view monitor



Front Camera

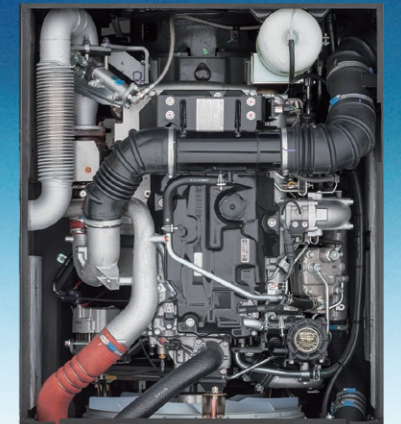
Suspension

Semi-elliptic leaf springs with hydraulic lockout device.

Fast Traveling Speed

Max. Traveling Speed: 49 km/h

High Performance Engine



Mitsubishi 4M50-TL
4 cycle, turbo-charged and after cooled.
Max. Output: 129 kW at 2,700 min⁻¹ {rpm}
Max. Torque: 530 N-m at 1,600 min⁻¹ {rpm}

Hook Block Storage

Hook block stowing system enhances work efficiency.



Highly Maneuverability

The compact carrier can smoothly maneuver in narrow spaces.

Overall Length: approx. 7,540 mm

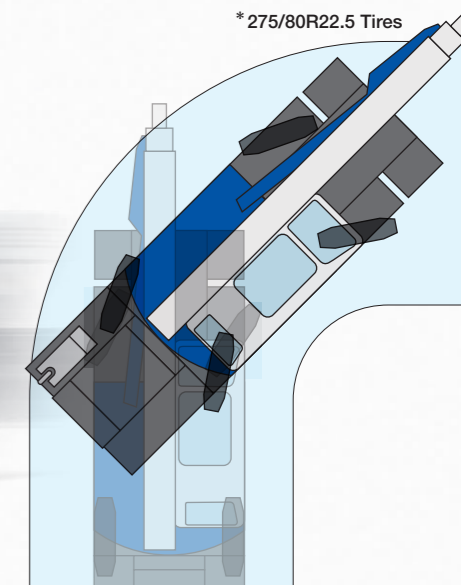
Overall Width: approx. 2,000 mm

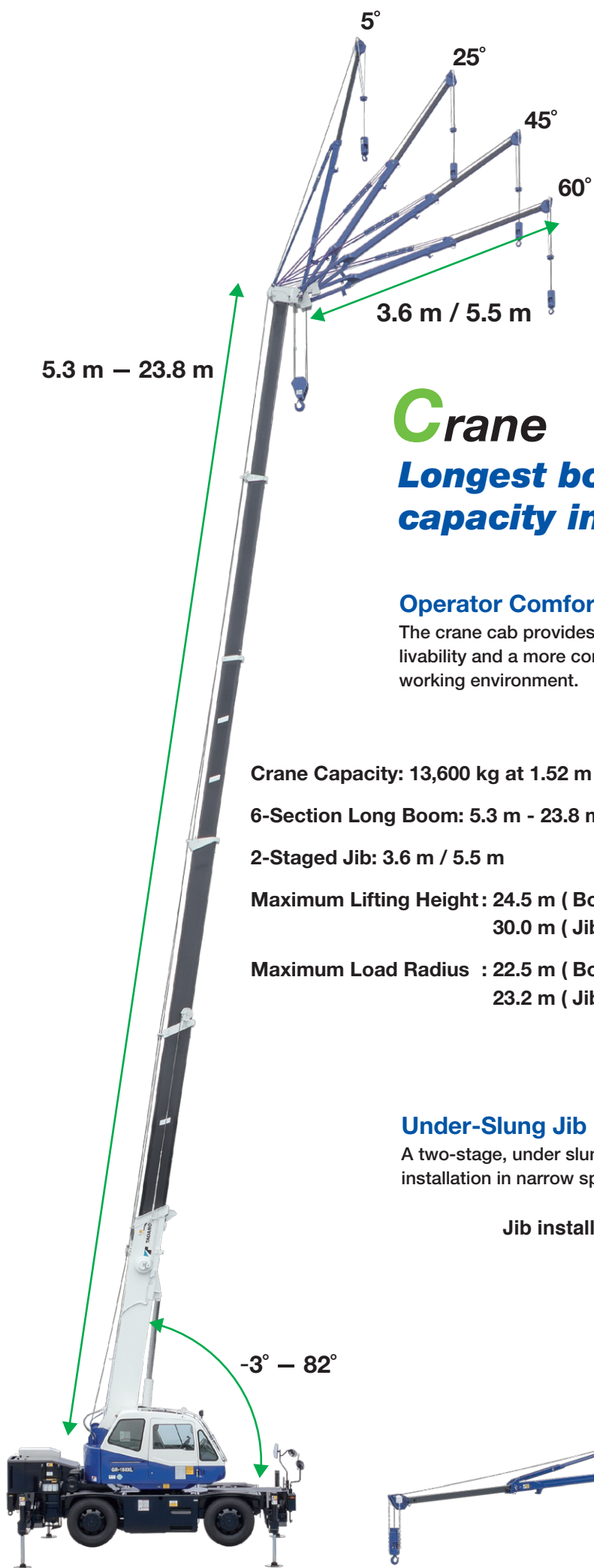
Overall Height: approx. 2,815 mm

Min. Turning Radius: 3.8 m (4-wheel steering)

6.5 m (2-wheel steering)

*275/80R22.5 Tires





Crane

Longest boom & highest lifting capacity in its class!

Operator Comfort

The crane cab provides improved livability and a more comfortable working environment.



Crane Capacity: 13,600 kg at 1.52 m

6-Section Long Boom: 5.3 m - 23.8 m

2-Stage Jib: 3.6 m / 5.5 m

Maximum Lifting Height : 24.5 m (Boom)
30.0 m (Jib)

Maximum Load Radius : 22.5 m (Boom)
23.2 m (Jib)

Under-Slung Jib

A two-stage, under slung jib makes installation in narrow spaces possible.

Jib installation



Load moment indicator [AML-C]



Tadano's AML-C is easy to use, innovative in design, displays important information to the operator and enables the operator to preset a custom working environment. For example, the AML-C shows the boom angle, boom length, load radius, operating pressure of the elevating cylinder, the extension width of the outriggers, slewing position, rated lifting capacity and present hook load. These features allow the AML-C to move seamlessly through all lifting operations without having to change configurations or input new codes to make the lift. The AML-C safety features provide both audible and visual warnings. When an operation approaches the load limit Tadano's slow stop function engages to avoid shock loads.



AML lamp

Environmentally Friendly Features

Eco Mode System

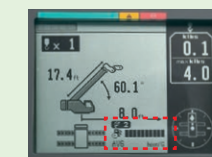
The system reduces fuel consumption and CO₂ emissions while the crane is in operation.



Eco mode switch

Fuel Monitoring System

The system constantly monitors fuel consumption on the AML screen.



During crane operation



While traveling



Outrigger Asymmetric Extension Width Control

When operating the crane with the asymmetric outriggers extended, the AML-C detects the extension width of all of the crane's outriggers (front, rear, left and right) to measure maximum work capacity in each area. When slewing the boom from the longer outrigger area to the shorter outrigger area, the AML-C detects the motion and displays the maximum capacity according to the extension width of each of the outriggers, and brings the motion to a slow stop before it reaches the maximum capacity.

The AML-C's slow stop function will help to minimize any safety risks even in the cases of operator error.

Wider steps and hand rails



Front steps

Rear steps

